



CASE REPORT

Open Access

# Thyroid transcription factor-1 positive primary breast cancer: a case report with review of the literature

Tor A Klingen\*<sup>1</sup>, Ying Chen<sup>1</sup>, Marian D Gundersen<sup>2</sup>, Hans Aas<sup>3</sup>, Bjørn Westre<sup>4</sup> and Torill Sauer<sup>5</sup>

## Abstract

This case describes an infiltrating breast tumour with thyroid transcription factor-1 (TTF-1) positive staining and ductal differentiation in a 72-year-old woman. The presence of ductal carcinoma in situ with positive TTF-1 is a strong indication that this is a primary tumour and not a metastasis from lung.

On PET scan and CT follow up there were no other tumours found in this patient. We are not aware of any previously reported TTF-1 positive primary breast carcinoma with ductal differentiation.

## Background

TTF-1 is a tissue-specific transcription factor expressed in epithelial cells of the lung and the thyroid, including C-cells as well as certain areas of the brain. TTF-1 is expressed in approximately 72% of pulmonary adenocarcinomas[1], and may be a valuable marker for identifying the lung as the site of origin of a metastatic adenocarcinoma.

## Case Presentation

A 72-year-old gravida 1/para 1 woman presented with a palpable mass in the left breast.

Her sister died of breast cancer some years earlier. There was a past history of operated parathyroid adenoma some years ago but no previous history of any malignancy. The patient was a non-smoker and had never used hormonal drugs.

Clinical examination demonstrated a palpable tumour in her left breast in the upper inner quadrant, no fixation to skin or underlying fascia.

Mammography from upper inner quadrant of the left breast showed a dense, relatively well defined, oval shaped mass lesion with a microlobulated margin measuring 51 × 33 × 35 mm with coarse calcifications centrally in the mass and in addition finer micro calcifications antero lateral to the main tumour, malignant in appearance.

The total maximal diameter including the calcifications was approximately 6 cm.

Ultrasound left breast showed an irregular solid malignant appearing tumour, corresponding to the mammographic lesion, measuring approximately 38 mm maximal diameter. No enlarged lymph nodes in the left axillae. PET scan and CT scan showed no other malignancy other than known breast tumour.

As no other origin for the tumour was found, the patient was treated with left mastectomy and sentinel lymph node mapping. The sentinel node was normal. The patient had an uncomplicated recovery and was discharged the next day following the operation.

## Materials and methods

We performed immunohistochemical investigation using the indirect streptavidin-biotin method on 3-5 µm slices. Regarding TTF-1 staining we used same methods at two different laboratories for verification of the findings. Further staining for CK5/6, CK 7, CK20, CK 18, mammaglobin, GCDFP-15, ER, PGR, chromgranin, synaptophysin, CD 56, HER 2/neu, Ki67, p 63 and MA was performed (table 1).

## Results

Macroscopic investigation showed a mastectomy specimen measuring 21 × 18 × 3 cm, weighing 1042 gram. In the upper inner quadrant there was a round, well-circumscribed tumour with largest diameter 3,8 cm laying 0,6

\* Correspondence: tor.klingen@siv.no

<sup>1</sup> Department of Pathology, Vestfold County Hospital, Halfdan Wilhelmsens Alle' 17, N-3116 Tønsberg, Norway

Full list of author information is available at the end of the article

**Table 1: Immunohistochemistry**

Antibody	Clone	Dilution	Company
TTF-1	SPT24	1:100	Novocastra
CK5/6	D5/16B4	1:800	Chemicon
CK7	OV-TL-12/30	1:100	DAKO
CK20	Ks20.8	Ready to use	Roche
CK18	DC10	1:40	DAKO
Mammaglobin	304-1A5	1:150	DAKO
GCDPF-15	23A3	1:200	Novocastra
ER	SP1	Ready to use	Roche
PGR	1E2	Ready to use	Roche
Chromogranin	LK2H10	Ready to use	Roche
Synaptophysin	27G12	1:80	Novocastra
CD56	1B6	1:50	Novocastra
Her2/neu	4B5	Ready to use	Roche
Ki67	30.9	Ready to use	Roche
P63	4A4	Ready to use	Roche
MA	HUC1-1	Ready to use	Roche

cm from the chest wall. The tumour was white with pale yellow necrotic areas (Figure 1).

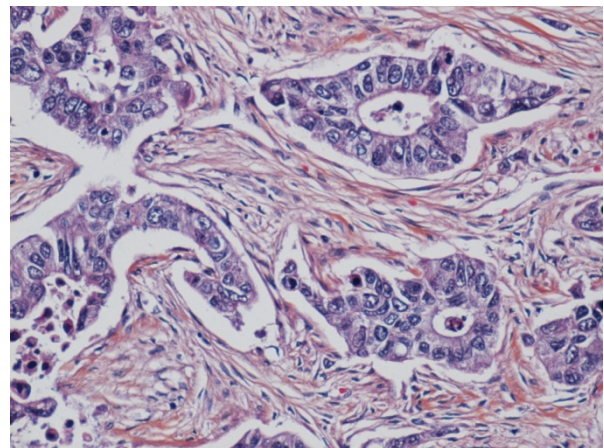
Microscopic investigation showed a sharp demarcation of the tumour to the surrounding breast tissue. There was some necrosis centrally, with more preserved structure peripherally in the tumour. The tumour tissue grew as trabeculae and confluent nests with scanty glandular tissue. The tumour cells were large with moderate amount of cytoplasm. The nuclei were variable in appearance being round, oval or spindle shaped. The chromatin was coarsely granulated and vesicular. There were numerous mitoses and apoptotic bodies (Figure 2).



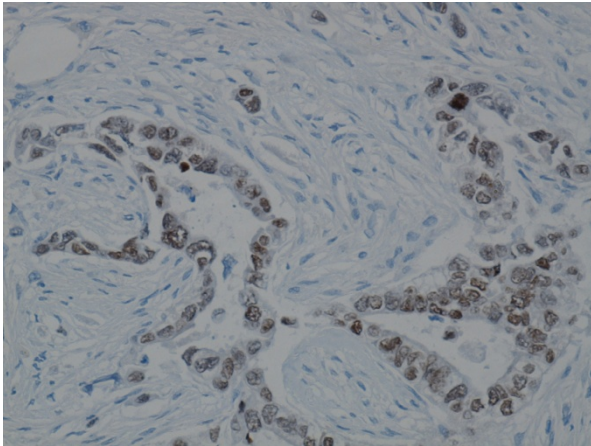
**Figure 1** Gross specimen showing well-circumscribed deep seated tumour with yellow necrotic areas.

The nuclei in the invasive tumour cells showed diffuse and strong positive immunoreactivity to TTF-1 marker (Figure 3). The neuroendocrine marker CD56 was slightly positive (Figure 4), whilst chromogranin and synaptophysin were negative. CK 5/6 was demonstrated in isolated cells within the tumour (Figure 5). Ki67 was positive in over 50% of the tumour cells. The tumour was positive for CK7 and CK18 but negative for ER, mammaglobin, GCDPF-15 and CK20. HER2/neu showed heterogeneous C-erb-2 protein score 2+/3+, but silver in situ hybridization (SISH) without gene amplification. There was a weak positive reaction to PGR in the biopsy material, but not in the mastectomy tissue.

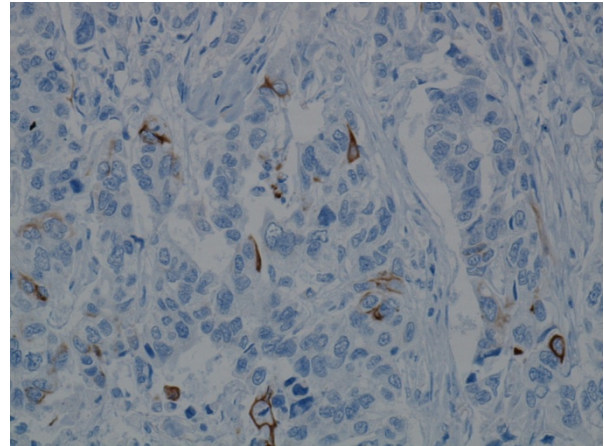
An in situ component was seen in the vicinity of the tumour. The myoepithelial layer of the carcinoma in situ was verified immunohistochemically with p63 and MA. The in situ tumour cells had the same morphological appearance as in the invasive tumour (Figure 6). The in



**Figure 2** Tumour with glandular elements, vesicular nuclei and mitoses.



**Figure 3** Invasive glandular tumour area is immunoreactive for TTF-1.



**Figure 5** CK5/6 immunoreactivity demonstrated in isolated cells within the invasive tumour.

situ component showed a positive reaction to TTF-1 (Figure 7) and CK5/6 (Figure 8).

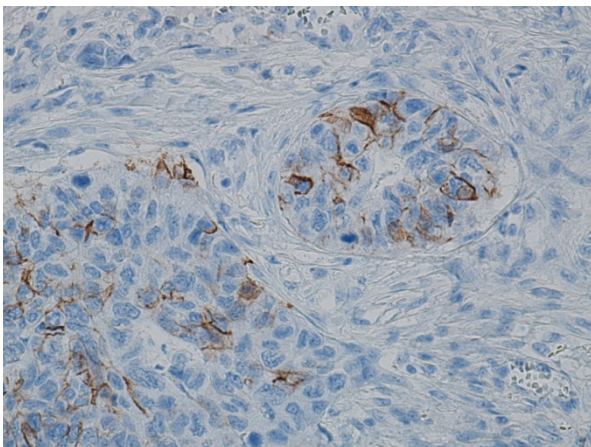
### Discussion

We believe this case represents TTF-1 positive infiltrating ductal breast carcinoma, histological grade 3. The tumour was heterogeneous with small areas of basal-like and neuroendocrine differentiation.

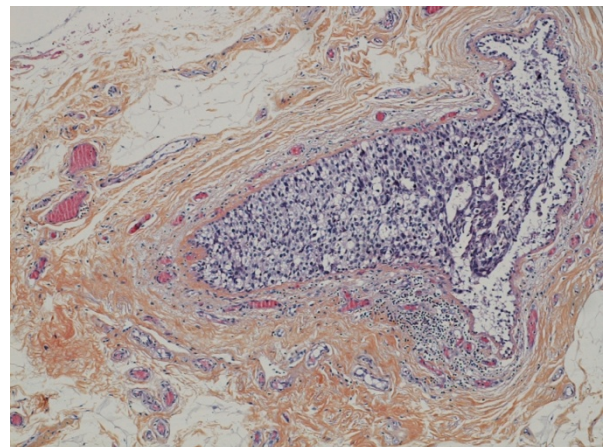
In three large studies of primary breast carcinomas [1-3] there were 96, 51 and 35 (total 182) carcinoma cases, respectively, that were all TTF-1 negative. Only a few cases of TTF-1 primary small-cell carcinoma in breast have been reported [4,5]. Yamamoto described two small-cell breast carcinomas with positive TTF-1 whilst Ersahin reported one case of small-cell breast carcinoma which was positive for TTF-1 and basal-like markers. In the case we report, we found no areas typical for small cell carcinoma growth, although some areas with trabecular

growth gave a partial neuroendocrine impression. Because of heterogeneous growth with focally oval and spindle shaped nuclei, a metaplastic carcinoma was considered. It is difficult to rule out this alternative, but a lack of squamous or heterologous metaplasia makes this less possible.

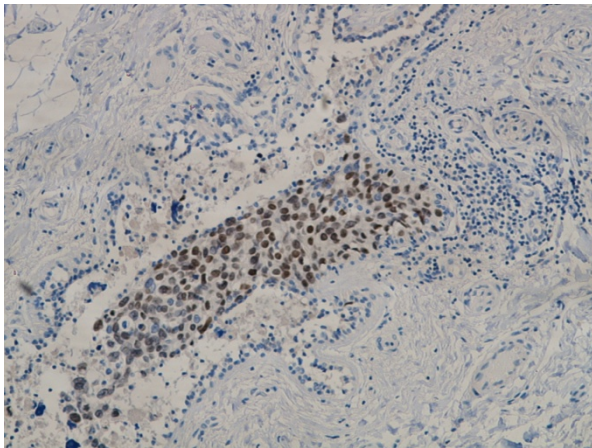
The initial investigations of the biopsy gave suspicion of metastasis from lung cancer because of the positive TTF-1 reaction. Previous studies have shown that lung cancer, malignant melanoma and lymphoma are the three most common candidates for secondary breast tumours [6-8]. An almost round tumour could resemble a metastasis, but some high grade primary tumours can also have this shape. In our case the tumour was deep seated in the breast (6 mm from the chest wall). This correlates poorly with secondary breast tumours which are often found near to the skin [6,8].



**Figure 4** CD56 immunoreactivity in a focal invasive tumour area.



**Figure 6** Ductal carcinoma in situ in vicinity of the tumour.

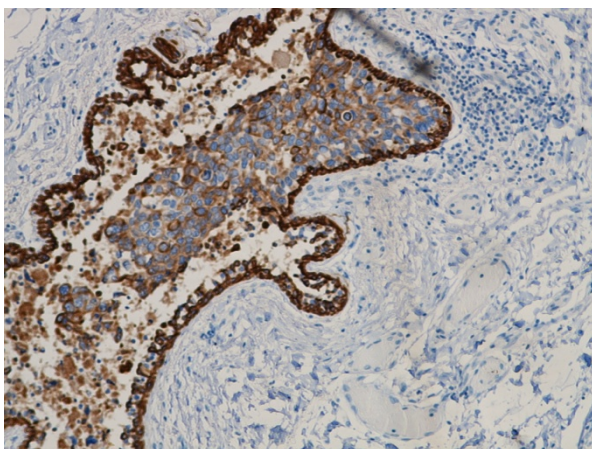


**Figure 7** Ductal carcinoma in situ with TTF-1 immunoreactivity.

The presence of a positive TTF-1 reaction in the in situ component as well as in the invasive component in this case gives strong support for primary breast carcinoma. We are not aware of any previously reported TTF-1 positive ductal carcinoma in situ of non small-cell type. In order to be quite sure that this represented breast ducts and not vessels with tumour tissue or peritumoral retraction artefacts, we also investigated these areas with MA and p63. Both markers were positive for myoepithelial cells.

Mammaglobin and GCDPF-15 were negative in the tumour, but this does not exclude primary breast carcinoma as these markers have a varied sensitivity of 60-75% in primary breast carcinomas [9,10].

HER2/neu expression can be seen in both carcinomas of breast and lung [11]. Our findings with C-erb-2 protein score 2+/3+ and SISH without gene amplification have no differential value in this case. We found weak positive reaction for PGR in the core biopsies. Positive reactions



**Figure 8** Ductal carcinoma in situ with CK 5/6 immunoreactivity.

for both ER and PGR have been reported for lung cancer [12] and give therefore no support to either breast cancer or metastasis diagnosis.

In agreement with Ersahin et al we found a positive expression of the basal-like marker CK5/6. This was especially noticeable in the in situ component, but only scattered positive cells in the invasive component. This can possibly represent a dedifferentiation in the tumour tissue. Previous studies have considered ductal carcinoma in situ with basal-like phenotype as a possible precursor to invasive basal-like cancer [13,14].

Our case showed high grade ductal carcinoma in situ and invasive tumour, and such tumours are more commonly basal like than low to intermediate grade lesions [15].

## Conclusion

We have presented an unusual case of TTF-1 positive primary infiltrating ductal carcinoma with focal basal-like and neuroendocrine differentiation. The in situ component with positive TTF-1 is the most important indication that this represents a primary tumour. Despite the fact that TTF-1 is known as a specific marker for lung and thyroid tumours, this case shows that primary non small-cell breast carcinomas can also be positive.

## Consent

Written informed consent was obtained from the patient for publication of this case report and accompanying images. A copy of the written consent is available for review by the Editor-in-Chief of this journal.

## Competing interests

The authors declare that they have no competing interests.

## Authors' contributions

TK wrote the manuscript and participated in histological diagnosis. YC participated in histological diagnosis and writing. MG supplied the relevant radiological details and participated in writing. HA operated the patient and supplied the relevant clinical details. BW participated in immunohistochemical analysis. TS participated in histological diagnosis and reviewed the manuscript. All authors have read and approved the final manuscript.

## Acknowledgements

We thank Marianne Odnakk Ludahl and Henning Jørgensen (Department of Pathology, Vestfold County Hospital) for excellent technical assistance.

## Author Details

<sup>1</sup>Department of Pathology, Vestfold County Hospital, Halfdan Wilhelmsens Alle' 17, N-3116 Tønsberg, Norway, <sup>2</sup>Department of Radiology, Vestfold County Hospital, Halfdan Wilhelmsens Alle' 17, N-3116 Tønsberg, Norway, <sup>3</sup>Department of Surgery, Vestfold County Hospital, Halfdan Wilhelmsens Alle' 17, N-3116 Tønsberg, Norway, <sup>4</sup>Department of Pathology, Ålesund Hospital, Åsehaugen 5, N-6017 Ålesund, Norway and <sup>5</sup>Department of Pathology, Ullevål University Hospital, Kirkeveien 166, N- 0407 Oslo, Norway

Received: 28 May 2010 Accepted: 17 June 2010

Published: 17 June 2010

## References

1. Ordonez NG: **Thyroid transcription factor-1 is a marker of lung and thyroid carcinomas.** *Adv Anat Pathol* 2000, **7**(2):123-7.
2. Bejarano PA, Baughman RP, Biddinger PW, Miller MA, Fenoglio-Preiser C, al-Kafaji B, Di LR, Whitsett JA: **Surfactant proteins and thyroid transcription factor-1 in pulmonary and breast carcinomas.** *Mod Pathol* 1996, **9**(4):445-52.
3. Dennis JL, Hvidsten TR, Wit EC, Komorowski J, Bell AK, Downie I, Mooney J, Verbeke C, Bellamy C, Keith WN, Oien KA: **Markers of adenocarcinoma characteristic of the site of origin: development of a diagnostic algorithm.** *Clin Cancer Res* 2005, **11**(10):3766-72.
4. Yamamoto J, Ohshima K, Nabeshima K, Ikeda S, Iwasaki H, Kikuchi M: **Comparative study of primary mammary small cell carcinoma, carcinoma with endocrine features and invasive ductal carcinoma.** *Oncol Rep* 2004, **11**(4):825-31.
5. Ersahin C, Bandyopadhyay S, Bhargava R: **Thyroid transcription factor-1 and "basal marker"--expressing small cell carcinoma of the breast.** *Int J Surg Pathol* 2009, **17**(5):368-72.
6. Hajdu SI, Urban JA: **Cancers metastatic to the breast.** *Cancer* 1972, **29**(6):1691-6.
7. Georgiannos SN, Chin J, Goode AW, Sheaff M: **Secondary neoplasms of the breast: a survey of the 20th Century.** *Cancer* 2001, **92**(9):2259-66.
8. Klingen TA, Klaasen H, Aas H, Chen Y, Akslen LA: **Secondary breast cancer: a 5-year population-based study with review of the literature.** *APMIS* 2009, **117**(10):762-7.
9. Wang LJ, Greaves WO, Sabo E, Noble L, Tavares R, Ng T, DeLellis RA, Resnick MB: **GCDFP-15 positive and TTF-1 negative primary lung neoplasms: a tissue microarray study of 381 primary lung tumors.** *Appl Immunohistochem Mol Morphol* 2009, **17**(6):505-11.
10. Kaufmann O, Deidesheimer T, Muehlenberg M, Deicke P, Dietel M: **Immunohistochemical differentiation of metastatic breast carcinomas from metastatic adenocarcinomas of other common primary sites.** *Histopathology* 1996, **29**(3):233-40.
11. Pellegrini C, Falleni M, Marchetti A, Cassani B, Miozzo M, Buttitta F, Roncalli M, Coggi G, Bosari S: **HER-2/Neu alterations in non-small cell lung cancer: a comprehensive evaluation by real time reverse transcription-PCR, fluorescence in situ hybridization, and immunohistochemistry.** *Clin Cancer Res* 2003, **9**(10 Pt 1):3645-52.
12. Ishibashi H, Suzuki T, Suzuki S, Niikawa H, Lu L, Miki Y, Moriya T, Hayashi S, Handa M, Kondo T, Sasano H: **Progesterone receptor in non-small cell lung cancer--a potent prognostic factor and possible target for endocrine therapy.** *Cancer Res* 2005, **65**(14):6450-8.
13. Bryan BB, Schnitt SJ, Collins LC: **Ductal carcinoma in situ with basal-like phenotype: a possible precursor to invasive basal-like breast cancer.** *Mod Pathol* 2006, **19**(5):617-21.
14. Livasy CA, Perou CM, Karaca G, Cowan DW, Maia D, Jackson S, Tse CK, Nyante S, Millikan RC: **Identification of a basal-like subtype of breast ductal carcinoma in situ.** *Hum Pathol* 2007, **38**(2):197-204.
15. Tamimi RM, Baer HJ, Marotti J, Galan M, Galaburda L, Fu Y, Deitz AC, Connolly JL, Schnitt SJ, Colditz GA, Collins LC: **Comparison of molecular phenotypes of ductal carcinoma in situ and invasive breast cancer.** *Breast Cancer Res* 2008, **10**(4):R67.

doi: 10.1186/1746-1596-5-37

**Cite this article as:** Klingen *et al.*, Thyroid transcription factor-1 positive primary breast cancer: a case report with review of the literature *Diagnostic Pathology* 2010, **5**:37

**Submit your next manuscript to BioMed Central and take full advantage of:**

- Convenient online submission
- Thorough peer review
- No space constraints or color figure charges
- Immediate publication on acceptance
- Inclusion in PubMed, CAS, Scopus and Google Scholar
- Research which is freely available for redistribution

Submit your manuscript at  
[www.biomedcentral.com/submit](http://www.biomedcentral.com/submit)

